



COLUMBIA TURNPIKE BRIDGE OVER THE BLACK BROOK LOCAL CONCEPT DEVELOPMENT STUDY

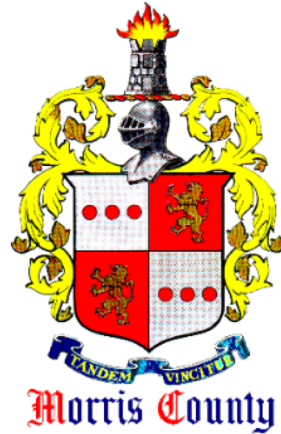
Borough of Florham Park, Morris County, New Jersey

PUBLIC INFORMATION CENTER #1

May 9, 2018



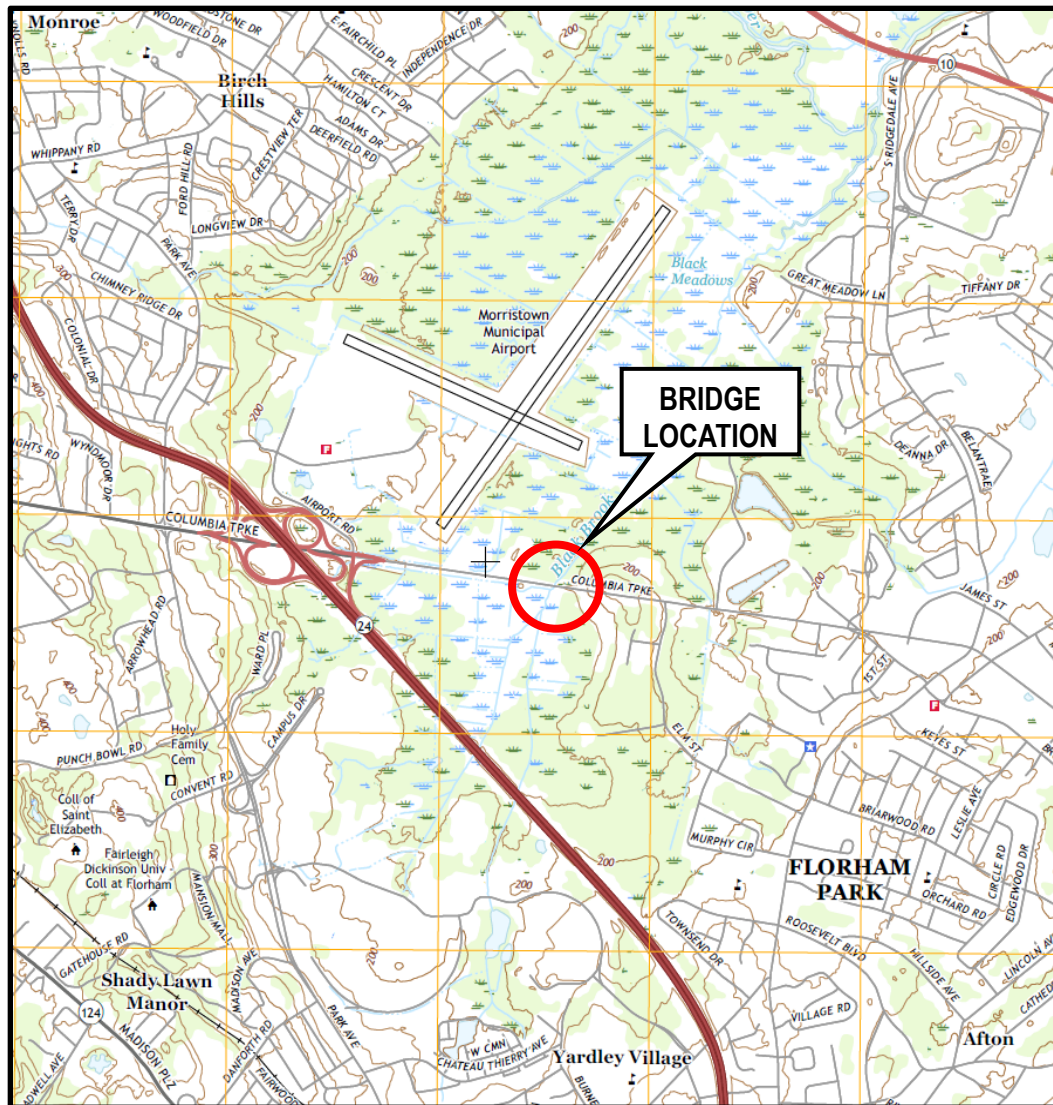
PROJECT TEAM



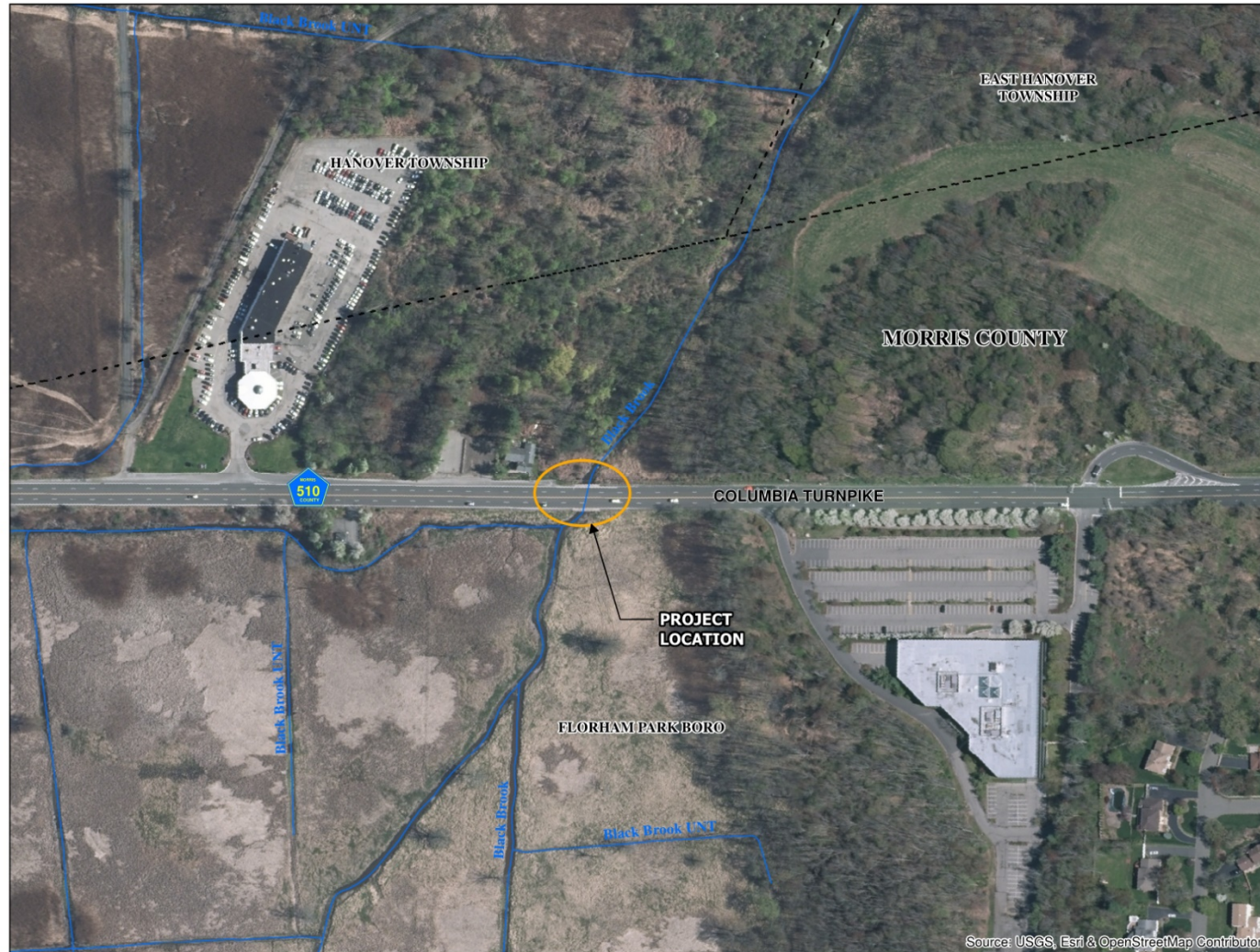
PROJECT OVERVIEW AND BACKGROUND

- Columbia Turnpike Bridge is located in Florham Park Borough, Morris County
- Bridge was built in 1929
- Bridge is in need of rehabilitation or replacement
- NJTPA and Morris County - Local Concept Development Study was initiated in November 2017
- Local Capital Project Delivery Program provides the opportunity to advance this project with public input and agency collaboration

PROJECT LOCATION MAP



AERIAL MAP



Aerial Map

Columbia Turnpike Bridge over Black Brook

Florham Park Borough
Morris County
New Jersey



Legend

- Streams
- Municipality Boundary



0 200 Feet



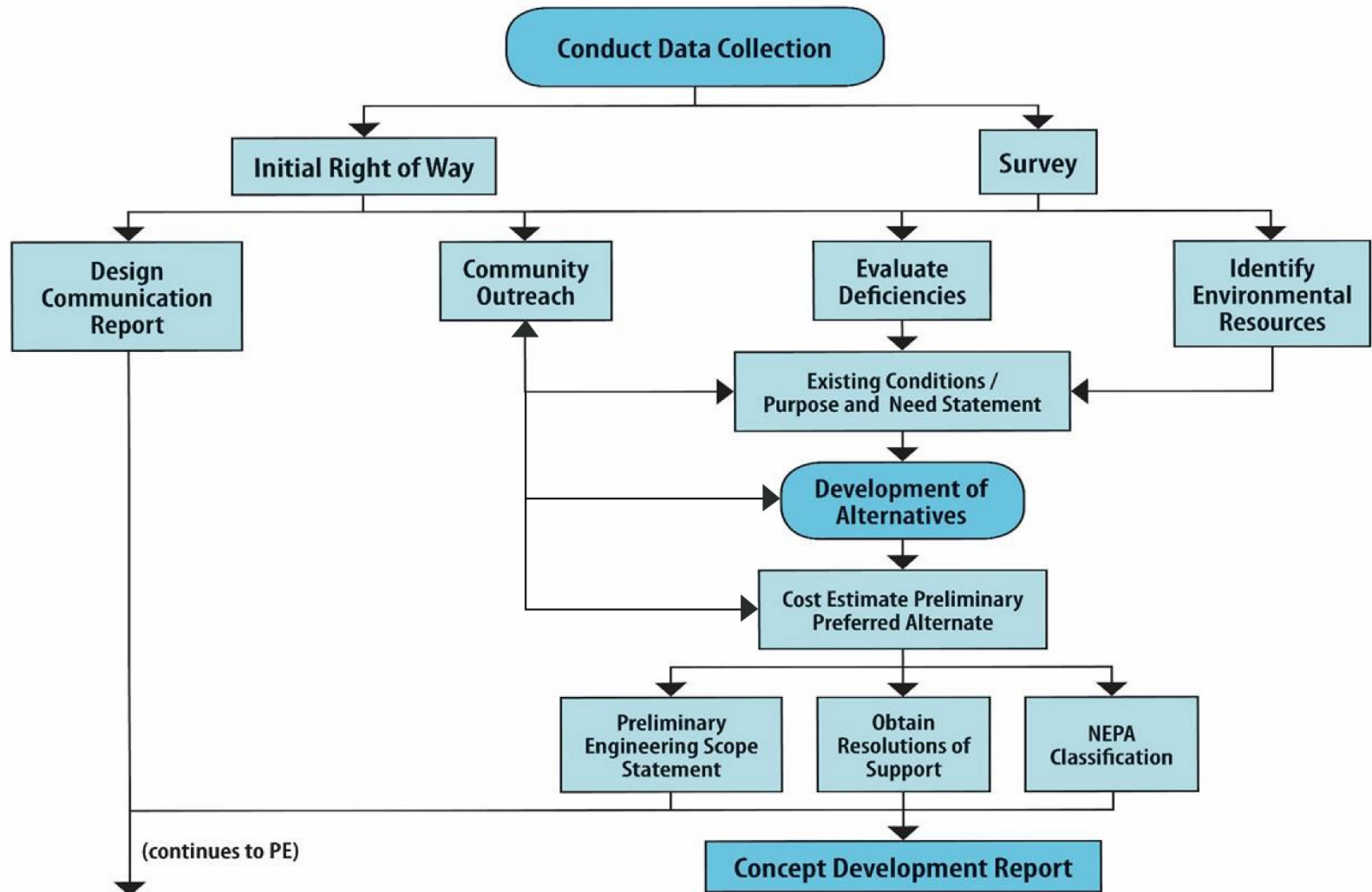
Project Location



LOCAL CAPITAL PROJECT DELIVERY PROCESS

Local Concept Development	Local Preliminary Engineering	Final Design/Right of Way Acquisition	Construction
<ul style="list-style-type: none">• Data Collection• Initiate Public Outreach Efforts• Purpose and Need Statement• Alternatives Development and Analysis• Select Preliminary Preferred Alternative• NEPA Classification• Local Concept Development Report	<ul style="list-style-type: none">• Continue Public Outreach Efforts• Preliminary Design• Preliminary ROW Documents• Preliminary Engineering Plans• Preliminary Construction Cost Estimate and Schedule• Approved Design Exception Report• Approved NEPA Environmental Document• Local Preliminary Engineering Report	<ul style="list-style-type: none">• Continue Public Outreach Efforts• Final Design• Final ROW Documents and ROW Acquisition• Final Contract Plans and PS&E Package• Final Utility Relocation Schemes• Secure Environmental Permits• Environmental Reevaluation	<ul style="list-style-type: none">• Continue Public Outreach Efforts• Complete Construction• As-Built Plans• Close-Out Documentation

LOCAL CONCEPT DEVELOPMENT PROCESS



COLUMBIA TURNPIKE BRIDGE DATA

- Year Built: 1929 (widened in 1960)
- Bridge Type: Single Span Bridge with concrete encased steel beams and rolled steel multi-stringers
- Overall Bridge Length = 35 feet
- Bridge Roadway Width = 45'-7"
- Posted Speed Limit = 50 MPH
- 2 lanes in each direction, no outside shoulders
- 4'-11" Sidewalks in each direction
- 2018 AADT = 33,840 vehicles per day

COLUMBIA TURNPIKE



*Columbia Turnpike west approach
to bridge, looking east*



*Columbia Turnpike east approach
to bridge, looking west*

BLACK BROOK



Black Brook and associated freshwater wetlands, looking south (downstream)



Black Brook and associated freshwater wetlands, looking north (upstream)

EXISTING BRIDGE CONDITION

- The bridge is in overall fair condition due to the condition of the superstructure
- Superstructure is in fair condition (rating of 5 out of 10) due to localized section loss and rusting at the beam ends, heavy rust staining and spalls, rust laminations, and diaphragms with section losses and holes
- The bridge is functionally obsolete based on the substandard bridge roadway width
- Sufficiency Rating is 57.5 out of 100 (17th Cycle)

EXISTING BRIDGE PHOTOS



Bridge south fascia, looking north



Bridge north fascia, looking south

EXISTING BRIDGE CONDITION



West approach, looking East



Bridge deck, looking south

EXISTING BRIDGE CONDITION



Damaged double rail element



Substandard guiderail attachment

EXISTING BRIDGE CONDITION



Under deck – Original Section (1920)



Under deck – Widened Section (1960)

EXISTING BRIDGE CONDITION

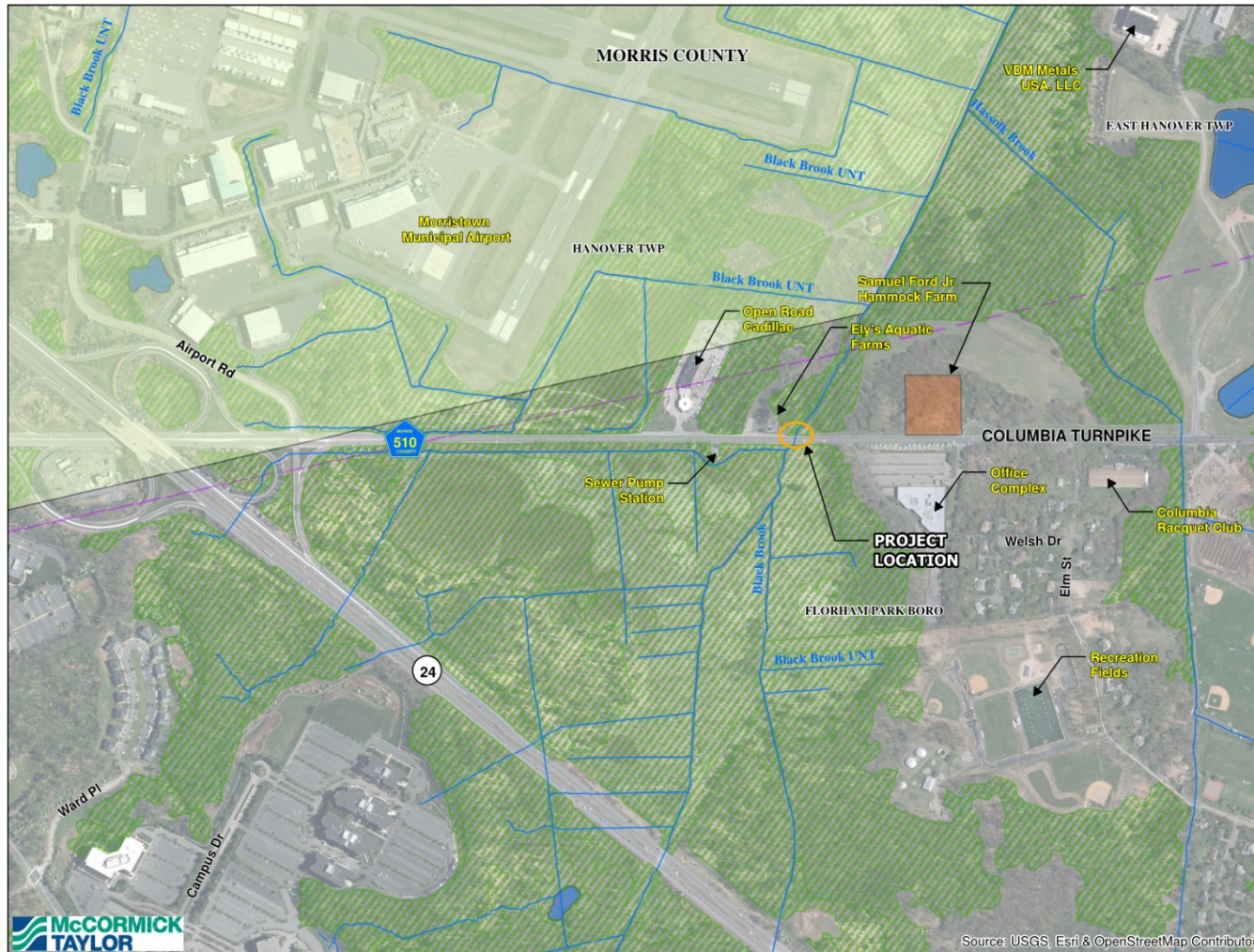


Abutment bearing seats



East Abutment - Northeast corner

ENVIRONMENTAL CONSTRAINTS MAP



ENVIRONMENTAL CONSTRAINTS MAP

Columbia Turnpike Bridge
Florham Park Borough
Morris County
New Jersey



Legend

- Streams
- Municipality Boundary
- Highlands Planning Area
- Historic Properties
- Wetlands
- Waterbody



0 600 Feet



SITE CONSTRAINTS



*Sewer Pump Station located
west of the bridge*



*Ely's Aquatic Farm located just
west of the bridge*

SITE CONSTRAINTS



*Office complex located
east of the bridge*



*Morristown Airport located
west of project limits*

ENVIRONMENTAL PROCESS

- Federally funded projects require National Environmental Policy Act (NEPA) documentation, including Section 106 Consultation
- Environmental Screening Report identifies environmental resources and concerns
- The Preliminary Preferred Alternative will seek to avoid, minimize and/or mitigate environmental impacts
- Coordination with permitting agencies will occur throughout the process
- Process includes community involvement and public outreach

PROJECT STATUS

- Project initiated in November 2017
- Ongoing Data Collection Efforts
 - Performed Base Mapping and Project Survey
 - Completed Environmental Screening Report
 - Obtained and reviewed Bridge Inspection Reports, As-Built Plans, Crash Data, and Traffic Data
 - Identified existing utilities
 - Conducted Traffic Counts and Crash Analysis
 - Identified existing Substandard Design Elements
 - Completed existing hydrology & hydraulic analysis
 - Prepared Draft Project Fact Sheet
 - Initiated Public Outreach efforts
 - Began developing Draft Purpose and Need

PURPOSE AND NEED

- Project Purpose defines the transportation problem to be solved
- Project Need provides justification to support the project purpose
- Goals and Objectives include issues that should also be addressed as part of the solution
- Purpose and Need Statement is required for any project that will require NEPA documentation

PROJECT SCHEDULE

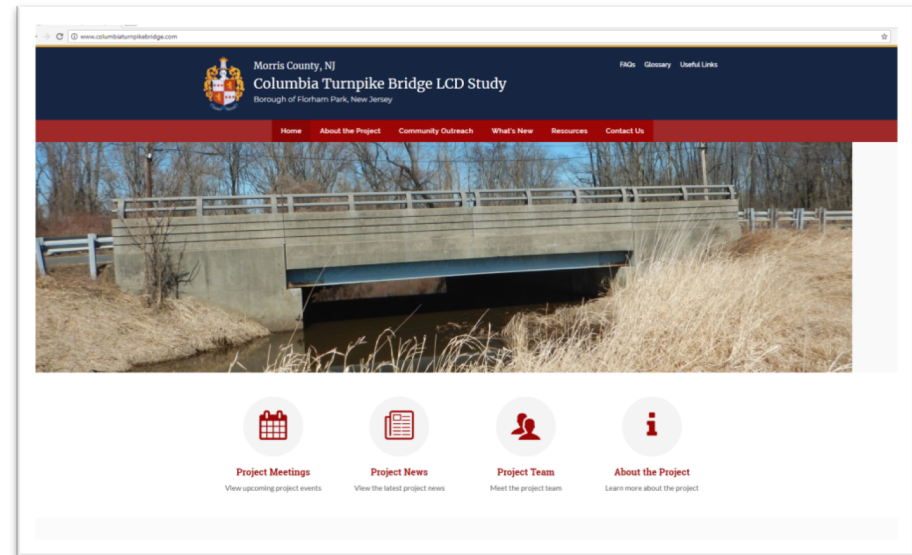
- 18 month completion schedule
- **Major Milestones**
 - Purpose and Need Statement – May 2018
 - Development of Conceptual Alternatives – July 2018
 - Selection of Preliminary Preferred Alternative – November 2018
 - Submission of Draft Local Concept Development Report – March 2019
 - Completion of Local Concept Development Phase – June 2019

COMMUNITY INVOLVEMENT SCHEDULE

- Local Officials Briefing #1 – April 24, 2018
- Public Information Center #1 – May 9, 2018
- Local Officials Briefing #2 (Conceptual Alternatives) – Summer 2018
- Stakeholders Meeting (Conceptual Alternatives) – Summer 2018
- Public Information Center #2 (Conceptual Alternatives) – Summer 2018
- Local Officials Briefing #3 (Select PPA) – Fall 2018
- Public Information Center #3 (Presentation of PPA) – Fall 2018

PROJECT WEBSITE AND SOCIAL MEDIA

- PROJECT WEBSITE
 - <http://www.columbiaturnpikebridge.com/>
- TWITTER
 - @Columbia_Bridge
 - https://twitter.com/Columbia_Bridge
- POWERPOINT PRESENTATION
 - will be posted on the project website



PROJECT CONTACT INFORMATION

MEGHAN PACCIONE

Morris County Senior Engineer

mpaccione@co.morris.nj.us

RICHARD BRUNDAGE

NJTPA Project Manager

rbrundage@njtpa.org



THANK YOU

**For more information
or to contact us:**



Visit our website: www.ColumbiaTurnpikeBridge.com



Follow us on Twitter: [@Columbia_Bridge](https://twitter.com/Columbia_Bridge)